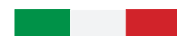


50



Since 1967



EXPERTISE | TECHNOLOGY | FLEXIBILITY





EXPERTISE | TECHNOLOGY | FLEXIBILITY

# ADHESIVE FELT PADS

## SYNTHETIC

### FLOKIT PAPER

thickness 0,4 mm - high density



### FLOKIT CARDBOARD

thickness 0,8 mm - high density



### VISIT

thickness 1 mm - low density



### VISIT-R

thickness 1,5 mm - high density



### POLIT

thickness 2 mm - low density



### POLIT-RR

thickness 2,5 mm - high density



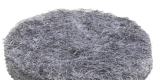
### POLIT-R

thickness 2,7 mm - medium density



### POLIT

thickness 3 mm - low density



### POLIT

thickness 3,2 mm - low density



### POLIT-R

thickness 3,5 mm - medium density



### POLIT-RR

thickness 4 mm - high density



### POLIT

thickness 4,8 mm - medium density



### SIMPELIT

thickness 5 mm - low density



### POLIT-RR

thickness 5,5 mm - high density



### POLIT

thickness 8 mm - medium density



### POLIT

thickness 10 mm - medium density



### POLIT

thickness 15 mm - medium density



## WOOL

### LANIT 280

thickness from 2 to 40 mm - low density



### LANIT 350

thickness from 2 to 40 mm - medium density



### LANIT 500

thickness from 2 to 40 mm - high density



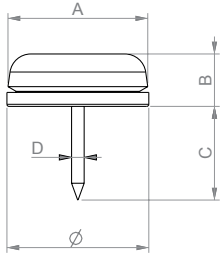
### LANIT 600

thickness from 3 to 40 mm - high density



# FELTIP GLIDES

## GLIDE WITH WITH NAIL FELTIP CUP

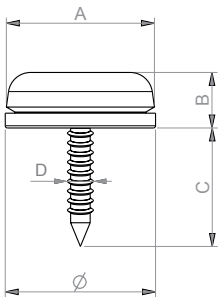


Diam	A	B	C	D
17	17	7,5	13	1,8
20	20	7,5	13	1,8
24	24	7,5	13	1,8
28	28	7,5	13	1,8



AVAILABLE COLOURS: brown, white

## GLIDE WITH SCREW FELTIP CUP

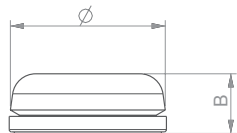


Diam	A	B	C	D
17	17	7,5	16	3,5
20	20	7,5	16	3,5
24	24	7,5	16	3,5
28	28	7,5	16	3,5



AVAILABLE COLOURS: brown, white

## ADHESIVE GLIDE FELTIP CUP

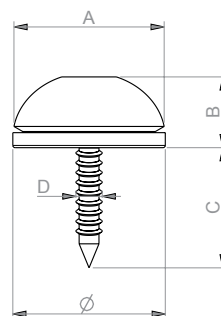


Diam	B
17	7,5
20	7,5
24	7,5
28	7,5



AVAILABLE COLOURS: brown, white

## GLIDE WITH SCREW FELTIP GLOBE









Diam	A	B	C	D
20	20	8	16	3,5
24	24	10	16	3,5
28	28	11	16	3,5



AVAILABLE COLOURS: brown

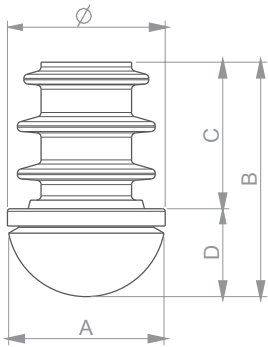
# GLIDES

	<b>FELT GLIDES WITH SCREW</b>		
white, brown		ø 20 ø 24 ø 28 ø 40	
	<b>FELT GLIDES WITH NAIL</b>		
white, brown		ø 17 ø 20 ø 24 ø 28 ø 35	
	<b>METAL GLIDES WITH NAIL</b>		
silver		ø 18 ø 20 ø 25 ø 30 ø 35	
	<b>METAL AND RUBBER GLIDES WITH NAIL</b>		
silver		ø 18 ø 20 ø 25 ø 30	
	<b>PLASTIC GLIDES WITH NAIL</b>		
white, brown, black		ø 10 ø 13 ø 15 ø 18 ø 20 ø 22 ø 25 ø 30 18x30 18x44	
	<b>PLASTIC AND RUBBER GLIDES WITH NAIL</b>		
white, brown, black		ø 20 ø 25 ø 30	
  	<b>PTFE GLIDES</b>		
grey		with nail ø 20 ø 25 ø 30 ø 40 with screw ø 19 ø 25 ø 30 ø 38 Adhesive ø 20 ø 25 ø 30 ø 40 ø 50 ø 60 ø 70 24x24 24x34 24x100 30x30 35x35x45	
	<b>SELF-ADHESIVE PTFE ON SHEET</b>		
grey		ø 17 ø 22 ø 28 80x100	
	<b>ADHESIVE POLYETHYLE</b>		
white		Size on request	Thickness 0,5 1 1,5 2 3

All sizes are quoted in mm

# FELTIP TUBE INSERTS

## TUBE INSERT FELTIP GLOBE

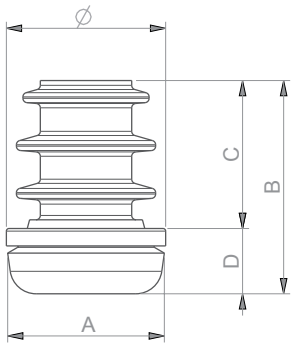


Diam	A	B	C	D
14	14	25	17	8
16	16	26	17	9
18	18	27	17	10
20	20	27	17	10
22	22	28	17	11
25	25	29	17	12



AVAILABLE COLOUR: black

## TUBE INSERT FELTIP CUP



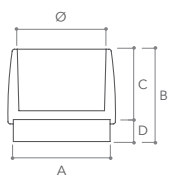
Diam	A	B	C	D
14	14	24,5	17	7,5
16	16	24,5	17	7,5
18	18	24,5	17	7,5
20	20	24,5	17	7,5
22	22	24,5	17	7,5
25	25	24,5	17	7,5



AVAILABLE COLOUR: black

# LEG TIPS AND FEET WITH FELT PADS

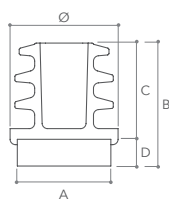
## OUTER CAPS WITH FELT PADS



Diam	A	B	C	D
Ø 12	Ø 14	21	16	5
Ø 14	Ø 16	21	16	5
Ø 16	Ø 18	21	16	5
Ø 18	Ø 20	21	16	5
Ø 20	Ø 22	21	16	5
Ø 22	Ø 24	21	16	5
Ø 25	Ø 27	21	16	5



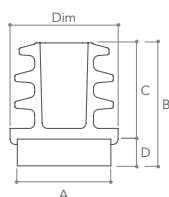
## ROUND TUBE INSERTS WITH FELT PADS



Diam	A	B	C	D
Ø 12	Ø 13	24	19	5
Ø 14	Ø 13	24	19	5
Ø 16	Ø 14	24	19	5
Ø 18	Ø 16	24	19	5
Ø 20	Ø 18	24	19	5
Ø 22	Ø 20	24	19	5
Ø 25	Ø 23	24	19	5



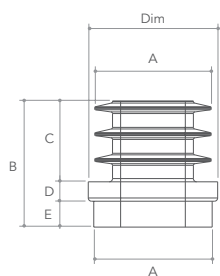
## SQUARE TUBE INSERTS WITH FELT PADS



Dim	A	B	C	D
15x15	13,5x13,5	23	18	5
16x16	13,5x13,5	23	18	5
18x18	15,5x15,5	19	14	5
20x20	17,5x17,5	23	18	5
25x25	22,5x22,5	23	18	5



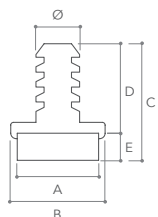
## OVAL TUBE INSERTS WITH FELT PADS



Dim	A	B	C	D	E
10x20	18x8	19,5	12,5	3	4



## PUSH IN FEET WITH FELT PADS

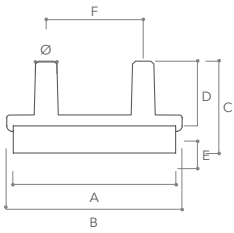


Diam	A	B	C	D	E
Ø 6	Ø 13	Ø 14	21,5	16,5	5
Ø 8	Ø 15	Ø 18	21,5	16,5	5



All sizes are quoted in mm

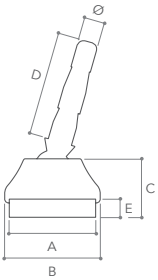
## 2-PIN FEET WITH FELT PADS



Dim	Ø	A	B	C	D	E	F
12x32	4	10x30	12x32	17	12	5	18



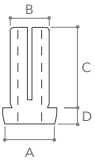
## FELT BASED CHAIR TILT GLIDES



Diam	A	B	C	D	E
Ø 6,5	Ø 24	Ø 26	16	30	5



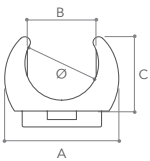
## PE INSERT



A	B	C	D
Ø 14	10	23	5
Ø 17	13	24	5,5
Ø 18	14	24	5,5



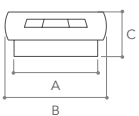
## SHELL CLAMP GLIDE FOR ROUND TUBES



Diam	A	B	C
Ø 8	18,5x32	7	10
Ø 10	19x32	9	11,5
Ø 11	19,5x32	10	12
Ø 12	20x32	11	13
Ø 14	21,5x32	13	14



## PLASTICS INSERT WITH FELT

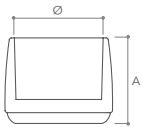


Dim	A	B	C
19x33	30,5x16	33x19	8,5



# PLASTIC LEG TIPS AND FEET

## TRANSPARENT PVC OUTER CAP

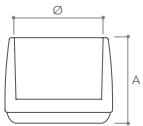


Diam	A
Ø 12	19
Ø 16	19
Ø 18	19
Ø 20	19
Ø 22	19
Ø 25	19



AVAILABLE COLOURS: transparent

## PVC OUTER CAP



Diam	A
Ø 10	18
Ø 12	21
Ø 14	23
Ø 16	25
Ø 18	27
Ø 20	30
Ø 22	32
Ø 25	32
Ø 26	37
Ø 28	38
Ø 30	41
Ø 32	43
Ø 35	47
Ø 40	33
Ø 50	33



AVAILABLE COLOURS: black, white

## WITH SCREW

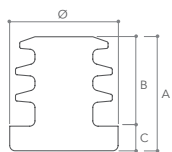


Diam	A
Ø 20	5
Ø 23	5
Ø 30	5



AVAILABLE COLOURS: black, white

## ROUND TUBE INSERT IN PE

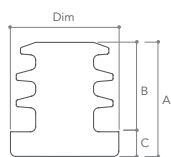


Diam	A	B	C
Ø 14	19	14	5
Ø 16	16	10	5
Ø 18	18	13	5
Ø 20	16	13	5
Ø 22	18	13	5
Ø 24	25	20	5
Ø 25	24	19	5
Ø 26	25	20	5
Ø 28	24	19	5
Ø 30	24	19	5
Ø 32	24	19	5
Ø 35	25	20	5
Ø 40	27	22	5
Ø 45	35	30	5
Ø 50	27	22	5



AVAILABLE COLOURS: black

## SQUARE TUBE INSERT IN PE

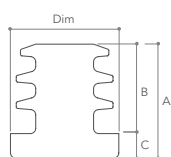


Dim	A	B	C
12x12	17	12	5
15x15	15	11	4
16x16	22	17	5
18x18	17	12	5
20x20	22	17	5
25x25	22	17	5
30x30	24	19	5
35x35	24	18	6
40x40	24	18	6



AVAILABLE COLOURS: black

## RECTANGULAR TUBE INSERT IN PE

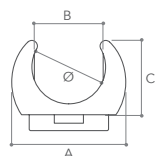


Dim	A	B	C
15x30	17	12	5
20x30	22	17	5
20x35	22	17	5
20x40	22	17	5
20x50	22	17	5
25x35	25	19	6
30x50	24	18	6



AVAILABLE COLOURS: black

## SHELL CLAMP GLIDE FOR ROUND TUBES

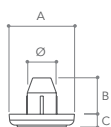


Diam	A	B	C
Ø 8	18,5x32	7	10
Ø 10	19x32	9	11,5
Ø 11	19,5x32	10	12
Ø 12	20x32	11	13
Ø 14	21,5x32	13	14



AVAILABLE COLOURS: black, white

## PUSH IN FOOT

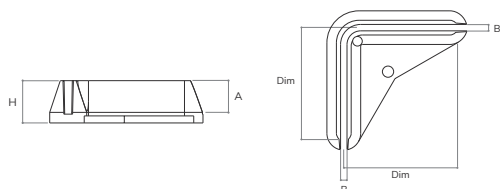


Diam	A	B	C
Ø 8	18	10	3,5



AVAILABLE COLOURS: black

## L-SHAPED LEG-TIP IN PE

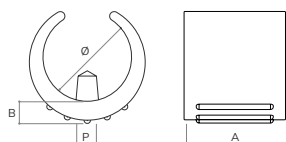


Diam	H	A	B
35x35	12	9,5	2



AVAILABLE COLOURS: black

## SADDLE FOOT IN PE



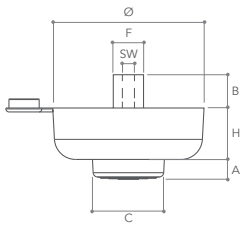
Diam	A	B	P
18-20	20	4	5,5
24-26	25	5,5	5,5



AVAILABLE COLOURS: black, white

# PLASTIC LEG TIPS AND FEET

## GEA ADJUSTABLE FOOT

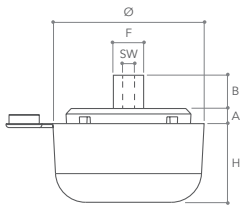


Diam	H	A	B	C	F	SW
Ø 50	15	0-10	10	24	10	4
Ø 50	17	0-10	11	24	10	4
Ø 50	27	0-10	11	24	10	4
Ø 50	44	0-10	11	24	10	4



AVAILABLE COLOURS: black, grey

## LEVEL ADJUSTABLE FOOT

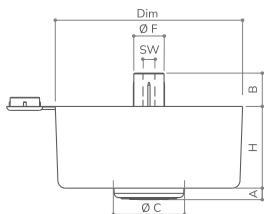


Diam	H	A	B	F	SW
Ø 50	26	0-10	11	10	4
Ø 50	45	0-10	11	10	4

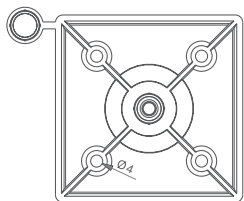


AVAILABLE COLOURS: black, grey

## SQUARE ADJUSTABLE FOOT

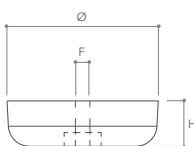


Dim	H	A	B	C	F	SW
63x63	17	0-10	11	24	10	4
63x63	27	0-10	11	24	10	4
63x63	44	0-10	11	24	10	4

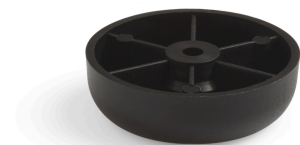


AVAILABLE COLOURS: black, grey

## PLASTIC FOOT

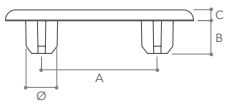


Diam	H	F
Ø 50	15	4,8



AVAILABLE COLOURS: black, grey

## 2-PIN FOOT 15X52 ROUNDED

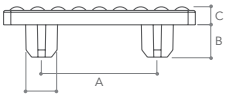


Dim	Diam	A	B	C
15x52	Ø 8,5	32	9	3



AVAILABLE COLOURS: black, white, brown

## 2-PIN FOOT 16X53 CORRUGATED

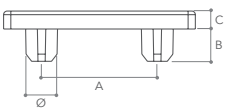


Dim	Diam	A	B	C
16x53	Ø 8,5	32	9	5



AVAILABLE COLOURS: black, white, brown

## 2-PIN FOOT 16X53 SMOOTH

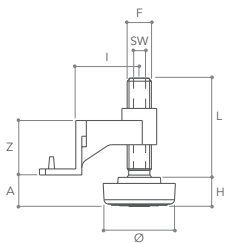


Dim	Diam	A	B	C
16x53	Ø 8,5	32	9	5



AVAILABLE COLOURS: black, white, brown

## ZAMAK ADJUSTABLE TILT GLIDE

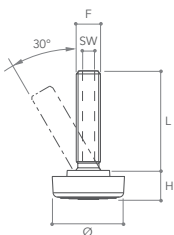


Diam	H	L	A	F	I	Z	SW
Ø 24	9,5	32	0-20	M8	21	18	4



AVAILABLE COLOURS: black, grey

## ADJUSTABLE TILT GLIDE

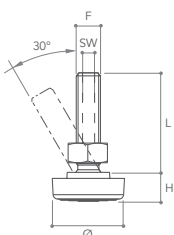


Diam	H	L	F	SW
Ø 24	9,5	20	M8	4
Ø 24	9,5	32	M8	4
Ø 24	9,5	49	M8	4



AVAILABLE COLOURS: black, grey

## ADJUSTABLE TILT GLIDE WITH BOLT



Diam	H	L	F	SW
Ø 24	9,5	20	M8	4
Ø 24	9,5	32	M8	4
Ø 24	9,5	49	M8	4



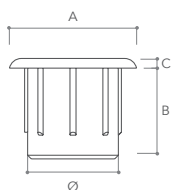
AVAILABLE COLOURS: black, grey

All sizes are quoted in mm

# PLUG HOLE COVER CAPS

CHOOSE YOUR COLOUR 

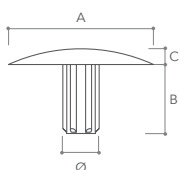
## PLUG HOLE COVER



Ø	A	B	C
Ø 5	Ø 8	5	0,8
Ø 6	Ø 8,5	6	1
Ø 8	Ø 10,5	7,5	0,8
Ø 10	Ø 13	7,5	0,8
Ø 12	Ø 16	8	1,2
Ø 15	Ø 19	3,5	1,2



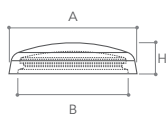
## PLUG-IN SCREW COVER



Ø	A	B	C
Ø 2,5	Ø 12	5,7	2
Ø 3	Ø 12	5,7	1,3



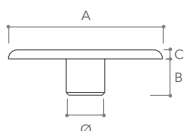
## SCREW COVER CAP



H	A	B
2,9	12	10



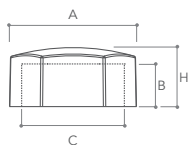
## PLUG IN HOLE COVER



Ø	A	B	C
Ø 3,2	Ø 17	2,7	1
Ø 4	Ø 17	2,7	1
Ø 4	Ø 17	4	1



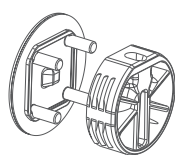
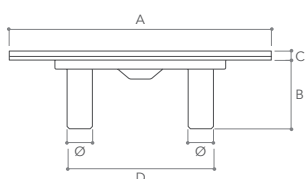
## PLUG NUT COVER



H	A	B	C
6,5	12	5	10



## PLASTIC CONNECTOR COVER CAP



Example of use



Diam	A	B	C	D
Ø 3	Ø 29	10	2	16,4



All sizes are quoted in mm

# RANGE OF COLOURS

Ed.03

 Neutro Neutral 50	 Bianco White 1	 Bianco White 55	 Bianco White 38	 Avorio Ivory 56	 Avorio Ivory 23	 Avorio Ivory 43	 Beige Beige 15	 Beige Beige 41
 Beige Beige 25	 Beige Beige 4	 Beige Beige 5	 Beige Beige 3	 Oca Ocher 26	 Oca Ocher 6	 Marrone Brown 79	 Marrone Brown 7	 Marrone Brown 28
 Marrone Brown 27	 Marrone Brown 17	 Marrone Brown 45	 Marrone Brown 16	 Marrone Brown 8	 Marrone Brown 46	 Marrone Brown 9	 Marrone Brown 29	 Marrone Brown 57
 Marrone Brown 30	 Marrone Brown 58	 Marrone Brown 59	 Marrone Brown 11	 Marrone Brown 10	 Marrone Brown 12	 Tortora Grey beige 60	 Tortora Grey beige 61	 Tortora Grey beige 62
 Tortora Grey beige 63	 Tortora Grey beige 64	 Tortora Grey beige 65	 Grigio Grey 14	 Grigio Grey 77	 Grigio Grey 78	 Grigio Grey 21	 Grigio Grey 80	 Grigio Grey 18
 Grigio Grey 66	 Grigio Grey 67	 Grigio Grey 47	 Grigio Grey 19	 Grigio Grey 2	 Grigio Grey 20	 Grigio Grey 22	 Grigio Grey 68	 Grigio Grey 76
 Nero Black 13	 Giallo Yellow 42	 Azzurro Light blue 69	 Azzurro Light blue 70	 Rosa Pink 71	 Rosa Pink 72	 Rosso Red 73	 Verde Green 32	 Verde Green 74
 Verde Green 39	 Verde Green 75							

Color shades are advisory and not binding.

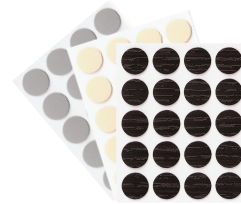
# ADHESIVE AND PLUG HOLE COVERS

## ADHESIVE HOLE COVERS

CHOOSE YOUR COLOUR

### ADHESIVE HOLE COVERS

Diam	A	Pcs per plate	Q.ty per box	moq
Ø 9	0,40	60	3.000	15.000
Ø 13	0,40	20	2.000	10.000
Ø 14	0,40	20	1.000	10.000
Ø 16	0,40	20	1.000	10.000
Ø 20	0,40	15	900	9.000
Ø 25	0,40	12	720	7.200
Ø 30	0,40	8	480	4.800
Ø 35	0,40	6	360	3.600
Ø 40	0,40	3	180	1.800

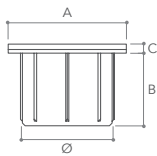


CHOOSE YOUR COLOUR

## PLUG HOLE COVERS

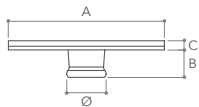
### DRILL HOLE COVER

Diam	A	B	C	Q.ty per bag	moq
Ø 5	Ø 8	7,5	1	5.000	10.000
Ø 5	Ø 15	7,5	1	5.000	10.000
Ø 8	Ø 12	3	1	5.000	5.000
Ø 8	Ø 12	7,5	1	2.500	5.000
Ø 10	Ø 13	7,5	1	2.500	5.000
Ø 12	Ø 15	3	1	2.000	4.000
Ø 12	Ø 15	7,5	1	2.000	4.000
Ø 14	Ø 19	7,5	1	1.000	2.000
Ø 15	Ø 19	3	1	2.000	2.000
Ø 16	Ø 19	7,5	1	1.000	2.000



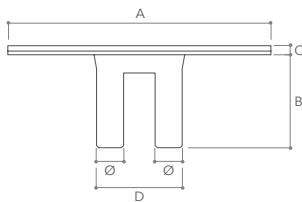
### PLUG IN HOLE COVER

Diam	A	B	C	Q.ty per bag	moq
Ø 4	Ø 17	4	1	2.000	4.000



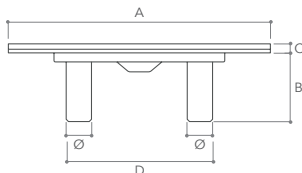
### PLUG IN HOLE COVER, 2 PINS

Diam	A	B	C	D	Q.ty per bag	moq
Ø 3	Ø 29	10	1	9,5	500	1.000



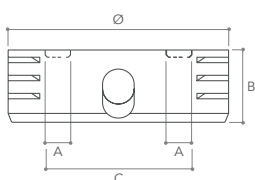
### CONNECTOR COVER CAP

Diam	A	B	C	D	Q.ty per bag	moq
Ø 3	Ø 29	10	1	16,4	500	1.000



### BLACK NYLON CONNECTOR HOUSING

Diam	A	B	C	Q.ty per bag	moq
Ø 26	Ø 3	8	16,4	2.500	5.000



 Bianco White 11164	 Bianco White 11164plr2	 Bianco White 13744v	 Bianco White 13759	 Bianco White 13933	 Bianco White 13982	 Bianco White 14223	 Bianco White 14267	 Bianco White 6762	 Panna Cream 4785
 Panna Cream 18052	 Panna Cream 18056	 Avorio Ivory 9833	 Avorio Ivory 9876	 Avorio Ivory 9971	 Avorio Ivory 44273	 Grigio Grey 4786	 Grigio Grey 93520	 Grigio Grey 93562c6	 Grigio Grey 93562op
 Grigio Grey 93562plr2	 Grigio Grey 93873	 Grigio Grey 94052	 Grigio Grey 94117	 Grigio Grey 94121	 Grigio Grey 94183	 Grigio Grey 94186cg	 Grigio Grey 94186op	 Grigio Grey 94191	 Grigio Grey 94308
 Grigio Grey 94387	 Grigio Grey 94388	 Grigio Grey 94544	 Grigio Grey 94604	 Silver Silver 01	 Alluminio Aluminium 93336	 Allu Met Alu Met 06	 Allu Met Alu Met 07	 Allu Met Alu Met 9368	 Allu Met Alu Met 9514
 Allu Met Alu Met 9528	 Allu Sat Alu Sat 01	 Cromato Chrome	 Bronzo Bronze 4761	 Nero Black 657	 Nero Black 657plr2	 Nero Black 670	 Nero Black 6717	 Verniciabile Colourable	 Giallo Yellow 28411
 Giallo Yellow 28425	 Arancio Orange 30510	 Rosso Red 48948	 Rosso Red 48953	 Rosa Pink 6903	 Rosa Pink 47363	 Ciclamino Cyclamen 47345	 Lilla Lillac 47309	 Lilla Lillac 47309plr2	 Marrone Brown 205
 Marrone Brown 2633	 Marrone Brown 2700	 Marrone Brown 2704	 Blu Blue 66624	 Blu Blue 69083	 Blu Blue 69113	 Blu Blue 69114	 Azzurro Light blue 68014	 Azzurro Light blue 68782	 Verde Green 4693
 Verde Green 78513plr2	 Verde Green 78544	 Verde Green 78553	 Verde Green 78577	 Verde Green 78595	 Verde Green 78634	 Verde Green 78646	 Verde Green 5543	 Senape Mustard 28417	 Acero Acer 257
 Acero Acer 277plr2	 Acero Acer 2128	 Betulla Birch 258	 Betulla Birch 260	 Betulla Birch 3116	 Betulla Birch 3132plr3	 Betulla Birch 3138	 Ciliegio Cherry 9019	 Ciliegio Cherry 9030	 Ciliegio Cherry 9049
 Ciliegio Cherry 9117	 Ciliegio Cherry 9118	 Ciliegio Cherry 9154	 Ciliegio Cherry 9161	 Faggio Beech 374	 Frassino Ash 168	 Larice Larch 6905	 Larice Larch 9136	 Larice Larch 59021	 Limba Limba 291plr2
 Limba Limba 292plr2	 Limba Limba c295plr2	 Magnolia 93622	 Marmo Marble 12081	 Marmo Marble 12082	 Marmo Marble 12083	 Marmo Marble 5472	 Mogano Mahogany 988	 Nocciola Hazelnut 5483	 Noce Walnut 6045

 Noce Walnut 6074plr2	 Noce Walnut 6077	 Noce Walnut 6078	 Noce Walnut 6080plr2	 Noce Walnut 6198	 Noce Walnut 6342	 Noce Walnut 6388	 Noce Walnut 44521	 Olmo Elm D36	 Olmo Elm 4742
 Olmo Elm 4805	 Olmo Elm 4833	 Olmo Elm 4959plr2	 Olmo Elm 40037	 Olmo Elm 40038	 Olmo Elm 40039	 Olmo Elm 40040	 Olmo Elm 73076	 Pero Pear Tree 577	 Pino Pine 282
 Pino Pine 283	 Pino Pine 2102	 Pino Pine 63003plr2	 Pino Pine 63013	 Roccia Rock 44524	 Rovere Oak 4501	 Rovere Oak 4548	 Rovere Oak 4557	 Rovere Oak 4569	 Rovere Oak 4583plr2
 Rovere Oak 4647	 Rovere Oak 4648	 Rovere Oak 4663	 Rovere Oak 4686	 Rovere Oak 4692	 Rovere Oak 4731	 Rovere Oak 4753	 Rovere Oak 4808	 Rovere Oak 4819	 Rovere Oak 4832
 Rovere Oak 4843	 Rovere Oak 4844	 Rovere Oak 4858op	 Rovere Oak 4858tch	 Rovere Oak 4971	 Rovere Oak 4983	 Rovere Oak 40041tch	 Rovere Oak 40041op	 Rovere Oak 40093	 Rovere Oak 40203
 Rovere Oak 40215plr2	 Rovere Oak 40278plr2	 Rovere Oak 40365	 Rovere Oak 40368	 Rovere Oak 40627	 Rovere Oak 5792	 Sabbia Sand 44523	 Sicomoro Sycamore 727	 Tabacco Tobacco 44522	 Teak Teak 1112
 Tela Fabric 21223	 Tela Fabric 21282	 Tela Fabric 21291	 Tela Fabric 21316	 Tela Fabric 21326	 Tela Fabric 21373	 Tela Fabric 21374	 Tiglio Linden 1052	 Tiglio Linden 1509	 Tortora Grey Beige 588plr2
 Tortora Grey Beige 4506	 Tortora Grey Beige 5107	 Tortora Grey Beige 5191	 Tortora Grey Beige 5202	 Tortora Grey Beige 5203	 Tortora Grey Beige 5264	 Tortora Grey Beige 5267	 Tortora Grey Beige 5309	 Tortora Grey Beige 5309 CG	 Trama Grid 21115
 Trama Grid 51116	 Trama Grid 51117	 Trama Grid 51132	 Trama Grid 51133	 Trama Grid 51134	 Trama Grid 51144	 Wengè Wengè 994plr2	 Wengè Wengè 9005	 Wengè Wengè 90033	 Zebrano Zebra wood 7004
 Zebrano Zebra wood 70019plr2	 Zebrano Zebra wood 70019tch								

Color shades are advisory and not binding.

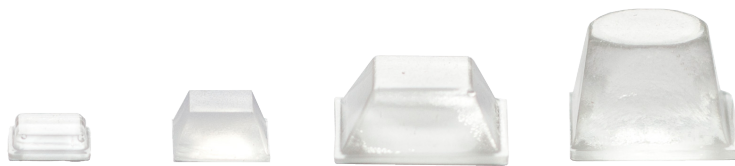
# ADHESIVE BUMPERS



<b>HEMISPHERICAL</b>	<b>7x1,5</b>	<b>8x1,6</b>	<b>8x1,8</b>	<b>8x2,2</b>	<b>10x1,5</b>	<b>10x3</b>	<b>10x3 S</b>	<b>11,1x5</b>	<b>12,7x3,5</b>	<b>13x7,5</b>	<b>16x7,9</b>	<b>19x9,5</b>
Base	7	8	8	8	10	10	10	11,1	12,7	13	16	19
Th.	1,5	1,6	1,8	2,2	1,5	3	3	5	3,5	7,5	7,9	9,5
Material type	Eva	Eva	Eva	Eva	Eva	Eva	Eva	Polyurethane	Eva	Eva	Polyurethane	Polyurethane
Q.ty per box	10.000	10.000	10.000	8.000	10.000	5.000	5.000	4.015	4.000	2.800	1.600	1.008



<b>CYLINDRICAL</b>	<b>10x1</b>	<b>18x1</b>	<b>13x4</b>	<b>20x6,2</b>	<b>16,5x10,2</b>	<b>22,3x10,1</b>
Base	10	18	13	20	16,5	22,3
Th.	1	1	4	6,2	10,2	10,1
Material type	Eva	Eva	Eva	Polyurethane	Polyurethane	Polyurethane
Q.ty per box	10.000	3.600	4.000	1.407	1.280	702



<b>SQUARE</b>	<b>10x2,5</b>	<b>12,5x5,8</b>	<b>20,5x7,5</b>	<b>20x13,2</b>
Base	10x10	12,5x12,5	20,5x20,5	20x20
Th.	2,5	5,8	7,5	13,2
Material type	Polyurethane	Eva	Polyurethane	Polyurethane
Q.ty per box	7.700	4.000	1.008	504



## MATERIAL AVAILABLE TO CUT TO SIZE

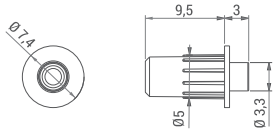
	Roll	Plate	Roll
Base	on request	on request	on request
Th.	0,5 - 0,8 - 1,6 - 3,2	1	from 1,5 to 30
Material type	Polyurethane	Eva	Mussit EPDM

All sizes are quoted in mm

# DOOR BUFFERS

## ASSEMBLED DOOR BUFFER **SAMMY-GO**

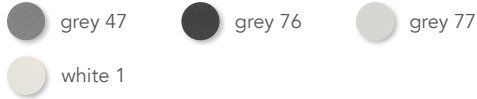
PATENTED



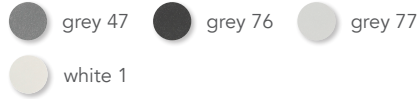
Material	Q.ty per box
plastic/rubber	1.000 pz



### HOUSING AVAILABLE COLOURS\*

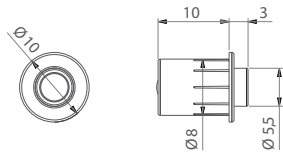


### RUBBER AVAILABLE COLOURS\*



## ASSEMBLED DOOR BUFFER **SAM-GO**

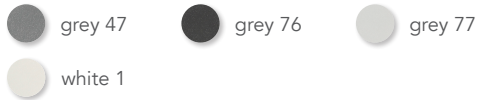
PATENTED



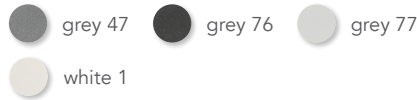
Material	Q.ty per box
plastic/rubber	1.000 pz



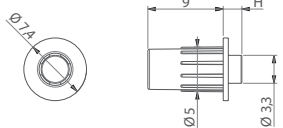
### HOUSING AVAILABLE COLOURS\*



### RUBBER AVAILABLE COLOURS\*



## ASSEMBLED DOOR BUFFER **SAMMY**



H	Material	Q.ty per box
2,3	plastic/rubber	1.000 pz
3	plastic/rubber	1.000 pz



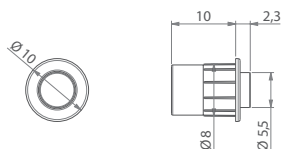
### HOUSING AVAILABLE COLOURS\*



### RUBBER AVAILABLE COLOURS\*



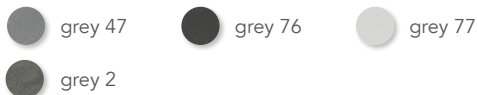
## ASSEMBLED DOOR BUFFER **SAM**



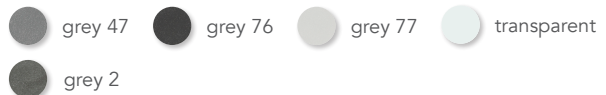
Material	Q.ty per box
plastic/rubber	1.000 pz



### HOUSING AVAILABLE COLOURS\*



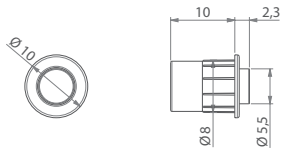
### RUBBER AVAILABLE COLOURS\*



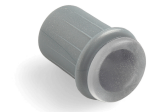
All sizes are quoted in mm

# DOOR BUFFERS

## ASSEMBLED DOOR BUFFER FRED



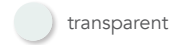
Material	Q.ty per box
plastic/rubber	1.000 pz



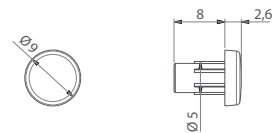
HOUSING AVAILABLE COLOURS\*



RUBBER AVAILABLE COLOURS\*



## CO-MOLDED DOOR BUFFER BICO



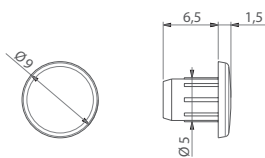
Material	Q.ty per box
plastic/rubber	1.000 pz



AVAILABLE COLOURS\*



## DOOR BUFFER FLAT



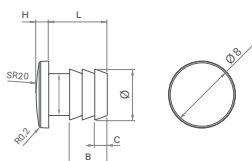
Material	Q.ty per box
plastic	5.000 pz



AVAILABLE COLOURS\*



## ASSEMBLED DOOR BUFFER MILO



Ø	L	H	A	B	C	Material	Q.ty per box
5,1	5,5	1,5	4	4,6	1,8	plastic/rubber	1.000 pz
5,1	5,5	2,5	4	4,6	1,8	plastic/rubber	1.000 pz
6,1	7	1,5	5	4,5	1,5	plastic/rubber	1.000 pz
6,1	7	2,5	5	4,5	1,5	plastic/rubber	1.000 pz



AVAILABLE COLOURS\*



All sizes are quoted in mm



EXPERTISE | TECHNOLOGY | FLEXIBILITY





Ramo S.r.l.

Via Faedis, 8

33040 Povoletto (UD) Italy

phone +39 0432 679194

fax +39 0432 679810

info@ramosrl.org

www.ramosrl.org

